

# RIVERFRONT BUSINESS PARK

16110-16140 WOODINVILLE REDMOND RD NE, WOODINVILLE, WA

CLASS A LIGHT INDUSTRIAL BUILDINGS

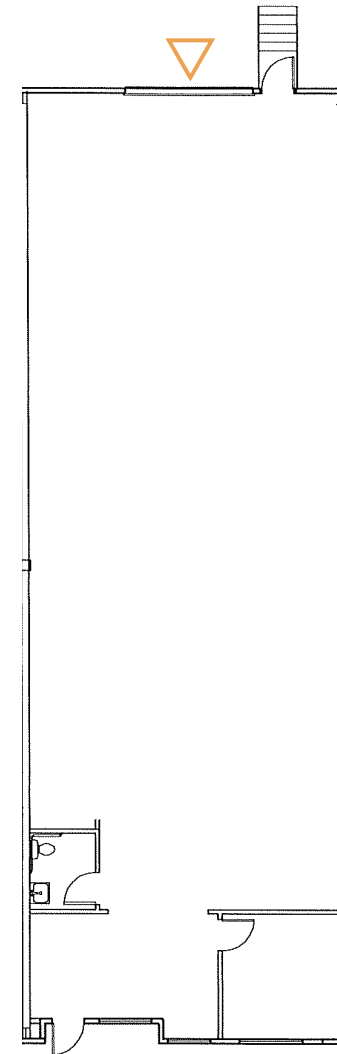
## BUILDING 16110 - SUITE 1005

AVAILABLE MAY 1, 2025

TOTAL SF:	2,709 RSF
OFFICE SF:	431 RSF
WAREHOUSE SF:	2,269 RSF
CLEAR HEIGHT:	20'
LOADING:	ONE DOCK-HIGH DOOR

*The information contained herein has been given to us by the owner or sources that we deem reliable. We have no reason to doubt its accuracy, but we do not guarantee it. Prospective tenants should carefully verify all information contained herein.*

 DOCK-HIGH DOOR



 [BACK TO AVAILABLE SPACE](#)

**BRODERICK**  
• GROUP •

**CONNOR GILCHRIST**  
425.274.4286  
[gilchrist@broderickgroup.com](mailto:gilchrist@broderickgroup.com)

**RAWLEY HOLMBERG**  
425.274.4284  
[holmberg@broderickgroup.com](mailto:holmberg@broderickgroup.com)