

KEY BANK BUILDING

10655 NE 4TH STREET • BELLEVUE, WA



For further information please contact exclusive leasing agents:

COLIN TANIGAWA

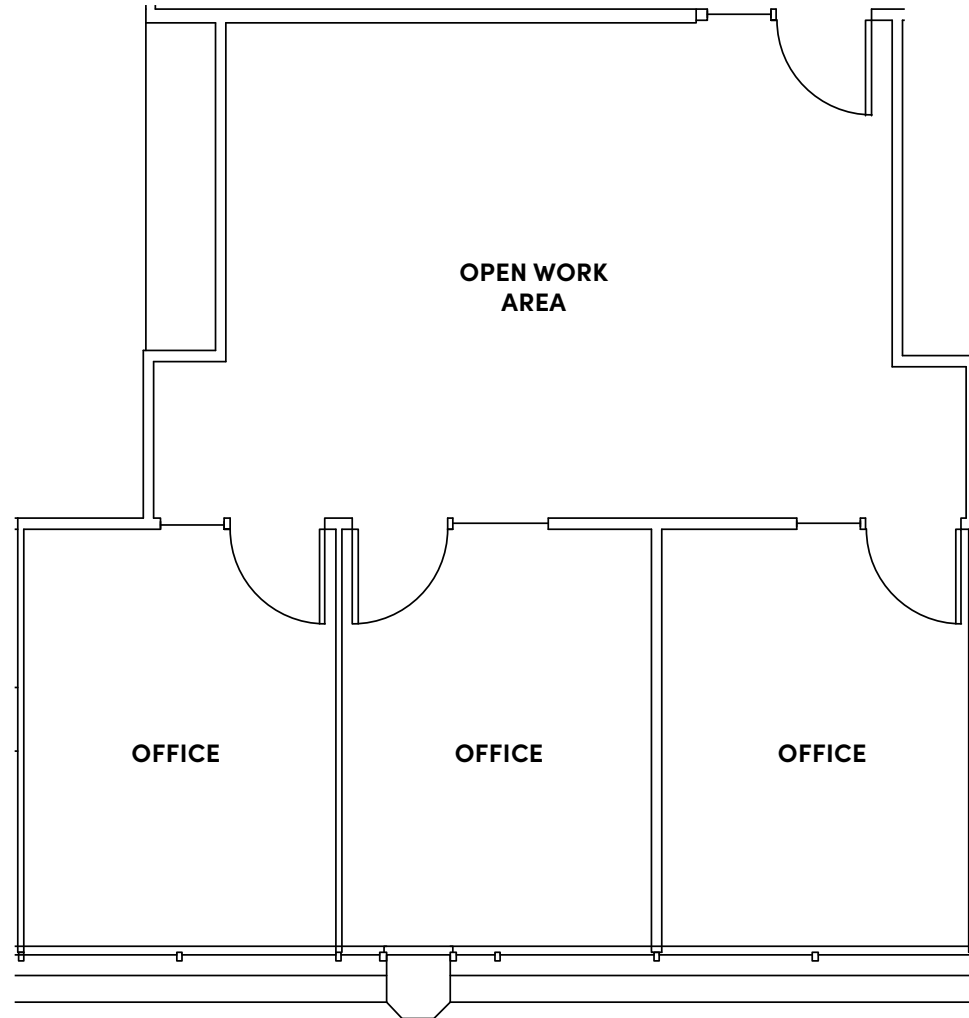
425.274.4283

tanigawa@broderickgroup.com

ERIC HAEHL

425.646.5266

haehl@broderickgroup.com



SUITE 208 962 SF

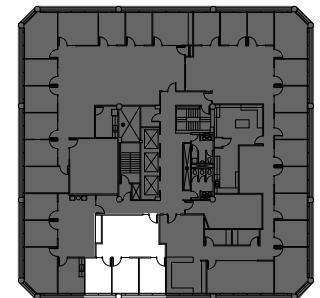
Three (3) private offices

Open work area

Available 1/1/25

Can be combined with Suite 210
for a total of 2,159 RSF

[SEE ENLARGED FLOOR PLAN](#)



[↑ BACK TO AVAILABLE](#)