

WASHINGTON BOAT CENTER

705 NE NORTHLAKE WAY
SEATTLE, WA

FOR MORE INFORMATION OR TO
SCHEDULE A TOUR, PLEASE CONTACT:



JENNY ARVISO
206.659.2151
jenny@incityinc.com

COURTNEY BUCK
206.499.1794
courtney@incityinc.com



CHRIS LANGER
425.646.5228
chris@gtcptl.com

The information contained herein has been given to us by the owner or sources that we deem reliable. We have no reason to doubt its accuracy, but we do not guarantee it. Prospective tenants should carefully verify all information contained herein.



WA BOAT
CENTER

**PARK YOUR BOAT
NEXT DOOR TO
YOUR OFFICE!**

520

WASHINGTON BOAT CENTER

705 NE NORTHLAKE WAY
SEATTLE, WA

FOR MORE INFORMATION OR TO
SCHEDULE A TOUR, PLEASE CONTACT:



JENNY ARVISO
206.659.2151
jenny@incityinc.com

COURTNEY BUCK
206.499.1794
courtney@incityinc.com



CHRIS LANGER
425.646.5228
chris@gtcptl.com

The information contained herein has been given to us by the owner or sources that we deem reliable. We have no reason to doubt its accuracy, but we do not guarantee it. Prospective tenants should carefully verify all information contained herein.

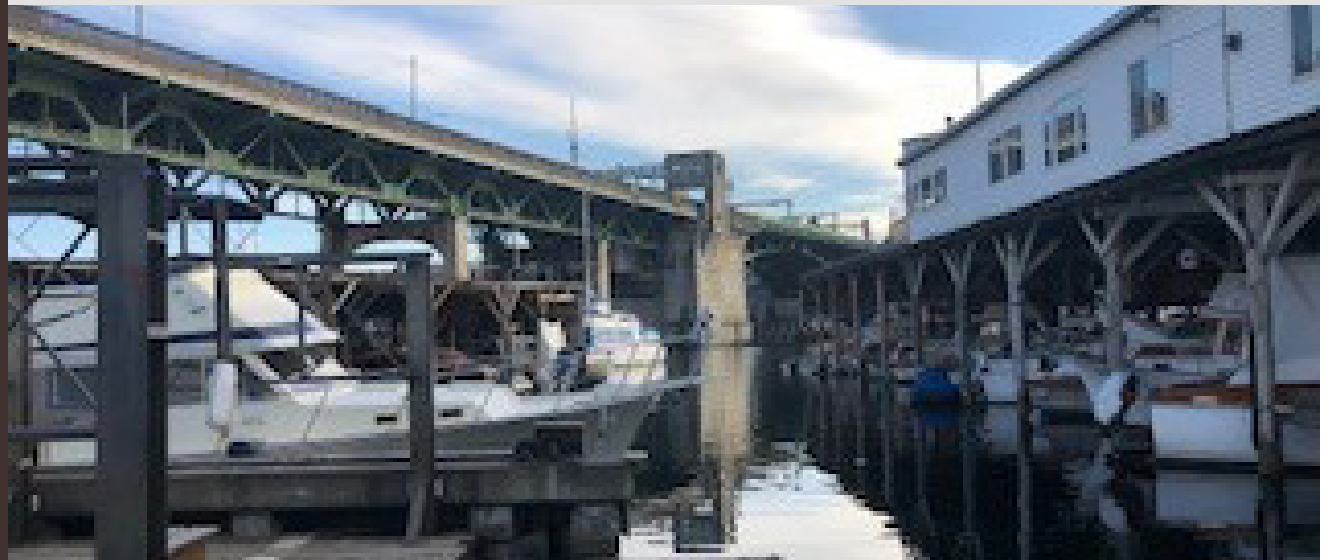
FUTURE BUILDING UPGRADES

NEW WINDOWS, SIDING, SIGNAGE AND
TENANT IMPROVEMENTS

CURRENT AVAILABILITIES

SUITE	RSF	AVAILABILITY	RENTAL RATE
Suite 709	471 RSF	Now	\$1,950/Mo, Gross
Suite 765C	894 RSF	Now	\$3,900/Mo, Gross

COMMENTS: Office space on the water and part of a larger marina, ample free parking in the area, right off the Burke Gilman Trail, high ceilings, common showers, open outdoor deck area in front, signage and visibility.



WASHINGTON

BOAT CENTER

705 NE NORTHLAKE WAY
SEATTLE, WA

FOR MORE INFORMATION OR TO
SCHEDULE A TOUR, PLEASE CONTACT:



JENNY ARVISO
206.659.2151
jenny@incityinc.com

COURTNEY BUCK
206.499.1794
courtney@incityinc.com

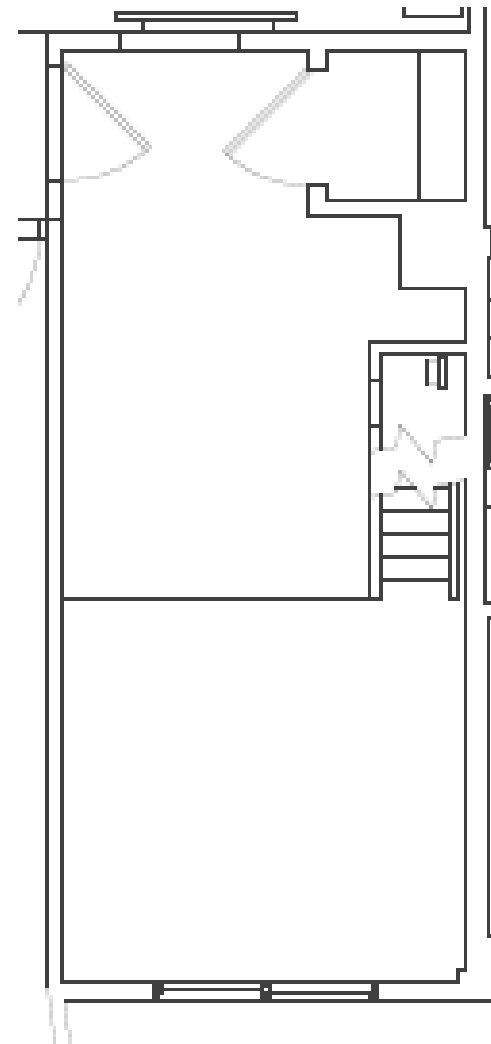


CHRIS LANGER
425.646.5228
chris@gtcptl.com

The information contained herein has been given to us by the owner or sources that we deem reliable. We have no reason to doubt its accuracy, but we do not guarantee it. Prospective tenants should carefully verify all information contained herein.

FLOOR PLAN

LEVEL 1



SUITE 709

471 RSF
Available Now

[BACK TO CURRENT AVAILABILITIES](#)



WASHINGTON BOAT CENTER

705 NE NORTHLAKE WAY
SEATTLE, WA

FOR MORE INFORMATION OR TO
SCHEDULE A TOUR, PLEASE CONTACT:



JENNY ARVISO
206.659.2151
jenny@incityinc.com

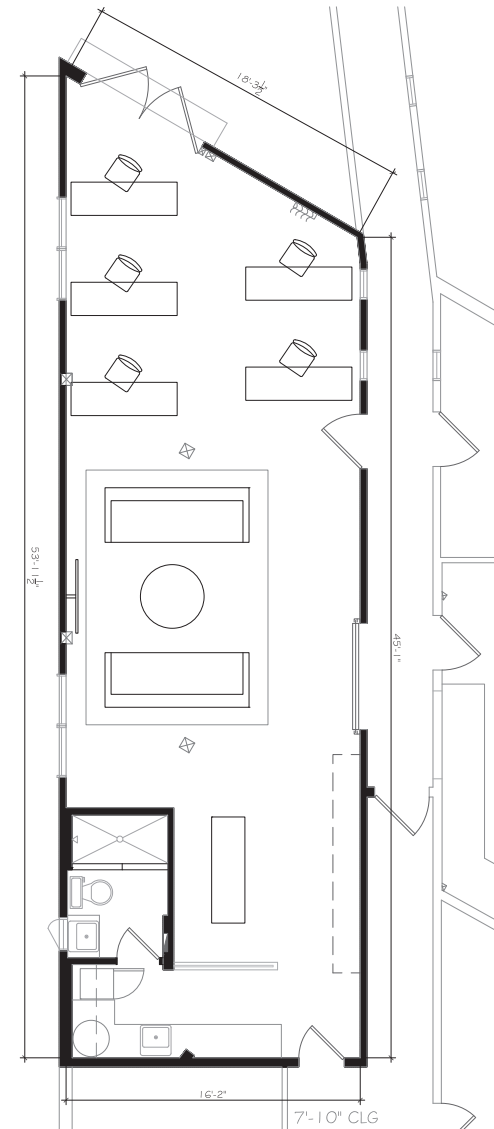
COURTNEY BUCK
206.499.1794
courtney@incityinc.com



CHRIS LANGER
425.646.5228
chris@gtcptl.com

The information contained herein has been given to us by the owner or sources that we deem reliable. We have no reason to doubt its accuracy, but we do not guarantee it. Prospective tenants should carefully verify all information contained herein.

FLOOR PLAN LEVEL 1



SUITE 765C

894 RSF
Available Now
Private Shower

BACK TO CURRENT AVAILABILITIES



WASHINGTON BOAT CENTER

705 NE NORTHLAKE WAY
SEATTLE, WA



FOR MORE INFORMATION OR TO
SCHEDULE A TOUR, PLEASE CONTACT:



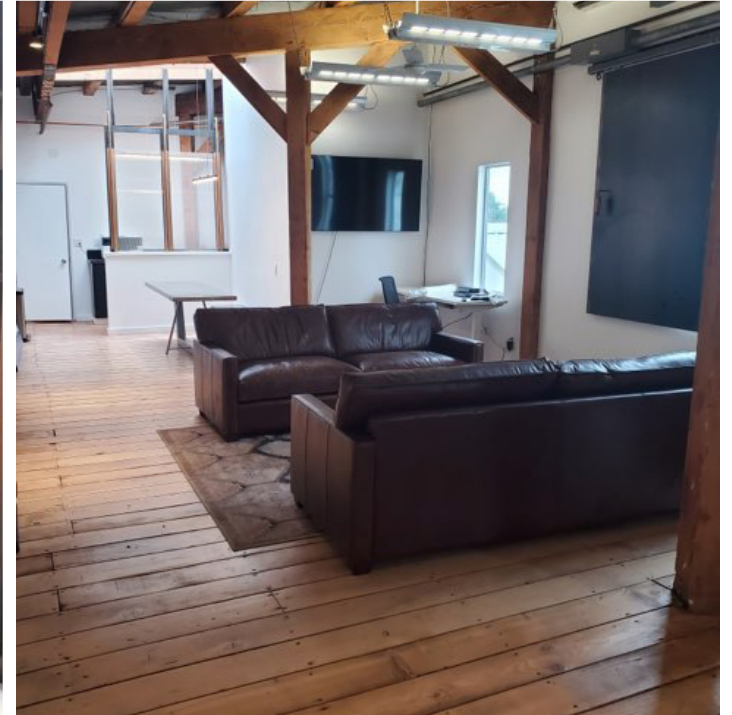
JENNY ARVISO
206.659.2151
jenny@incityinc.com

COURTNEY BUCK
206.499.1794
courtney@incityinc.com



CHRIS LANGER
425.646.5228
chris@gtcptl.com

The information contained herein has been given to us by the owner or sources that we deem reliable. We have no reason to doubt its accuracy, but we do not guarantee it. Prospective tenants should carefully verify all information contained herein.



WASHINGTON BOAT CENTER

705 NE NORTHLAKE WAY
SEATTLE, WA

FOR MORE INFORMATION OR TO
SCHEDULE A TOUR, PLEASE CONTACT:



JENNY ARVISO
206.659.2151
jenny@incityinc.com

COURTNEY BUCK
206.499.1794
courtney@incityinc.com



CHRIS LANGER
425.646.5228
chris@gtcptl.com

The information contained herein has been given to us by the owner or sources that we deem reliable. We have no reason to doubt its accuracy, but we do not guarantee it. Prospective tenants should carefully verify all information contained herein.

