

# LAKEVIEW Medical Dental BUILDING

3216 NE 45<sup>TH</sup> PLACE | SEATTLE, WA

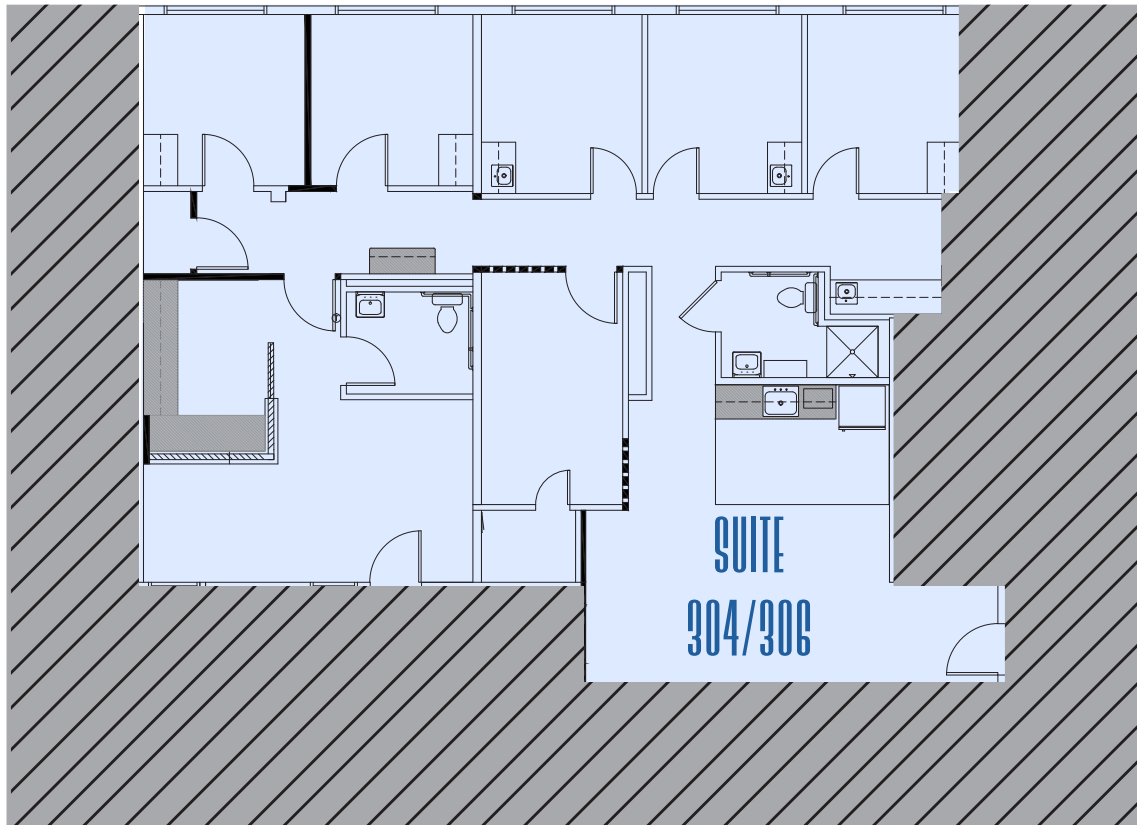
# SUITE 304/306

1,872 RSF

AVAILABLE NOW

## SUITE FEATURES:

- 5 exam rooms
- 2 restrooms + including shower
- Reception area
- X-ray suite
- Break room
- Back office / storage area



JENNIFER ARVISO  
206.659.2151  
[jenny@incityinc.com](mailto:jenny@incityinc.com)

COURTNEY BUCK  
206.499.1794  
[courtney@incityinc.com](mailto:courtney@incityinc.com)



CHRIS LANGER | 425.646.5228  
[lang@broderickgroup.com](mailto:lang@broderickgroup.com)